

**EVERYTHING
YOU ALWAYS
WANTED
TO KNOW
ABOUT**



What is **LIVING LAB**?

LIVING LAB is a research and development infrastructure for accelerating the technical development, the implementation and the social uptake of sustainable innovation.



Sustainable innovation

LIVING LAB helps European industries to achieve leadership in the development of successful sustainable products and services for greener households.



Cross-cultural research

LIVING LAB provides a unique research infrastructure of networked **LIVING LAB** houses across Europe.

Cross-cultural and cross-climate research can be conducted in parallel at **LIVING LAB's** in different countries.



Real home context

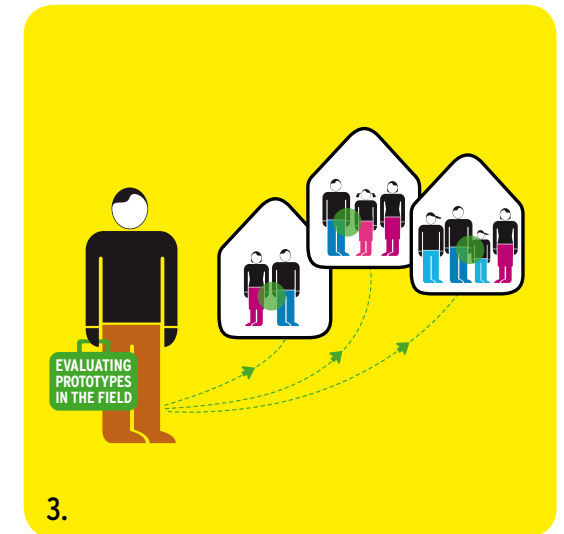
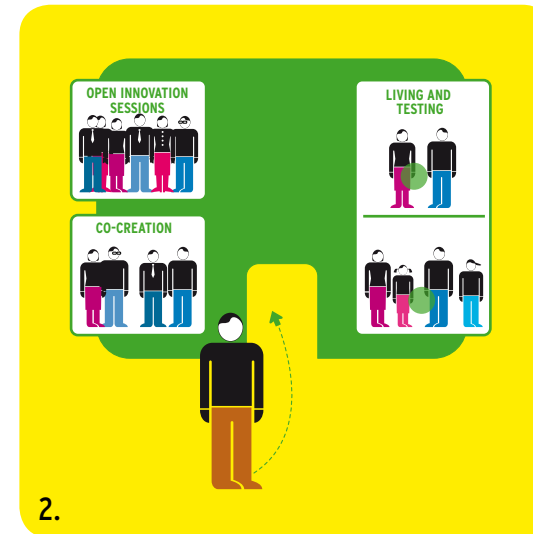
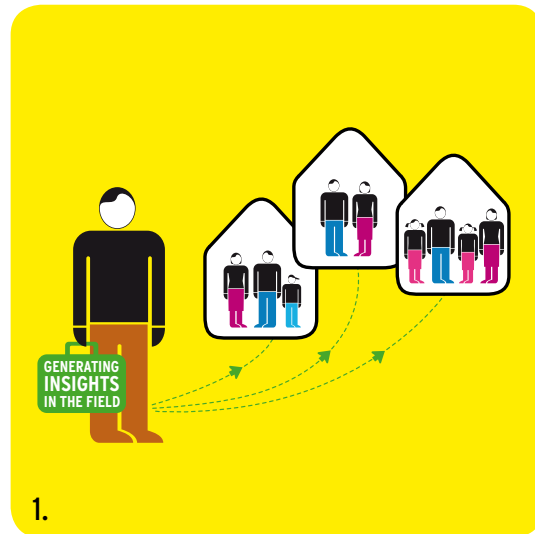
LIVING LAB employs user-centred design and research methods in order to understand and model user behaviour in the home context over an extended period of time.



How does **LIVING LAB** work?

The **LIVING LAB** approach:

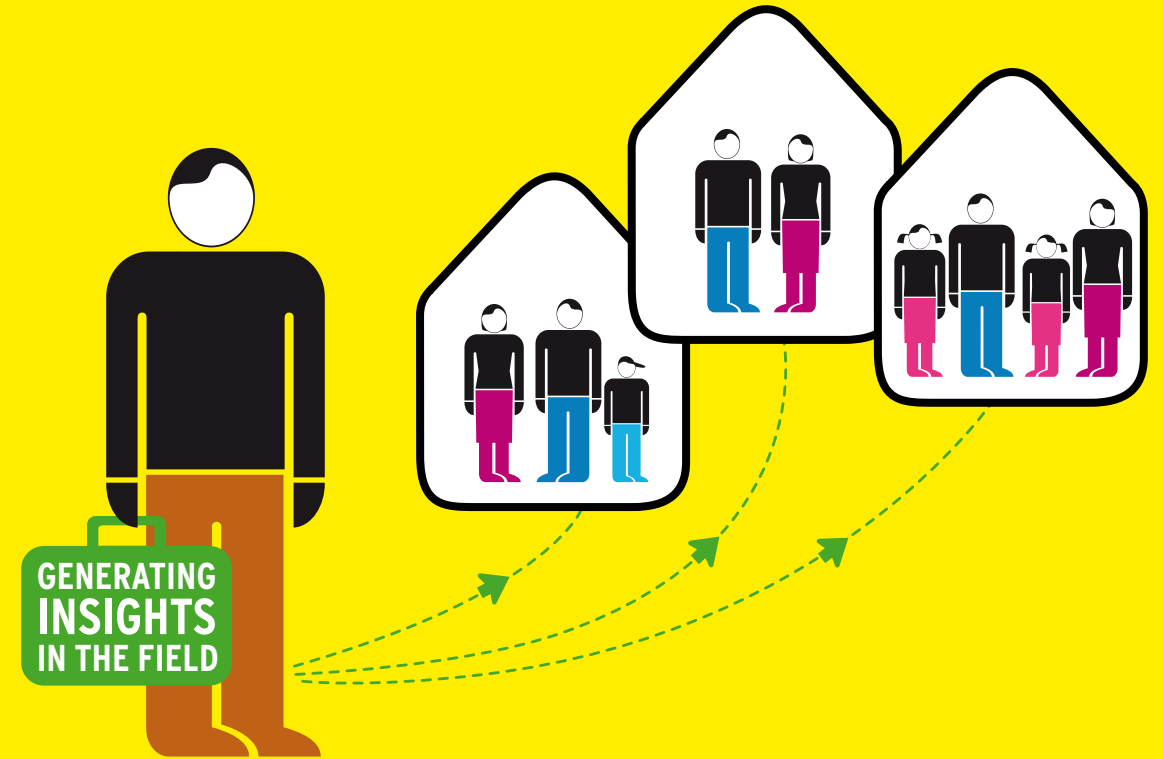
1. Generating insights
2. Developing and experiencing
3. Evaluating prototypes



1 Generating insights

LIVING LAB provides access to large numbers of users, generating insights into living behaviour.

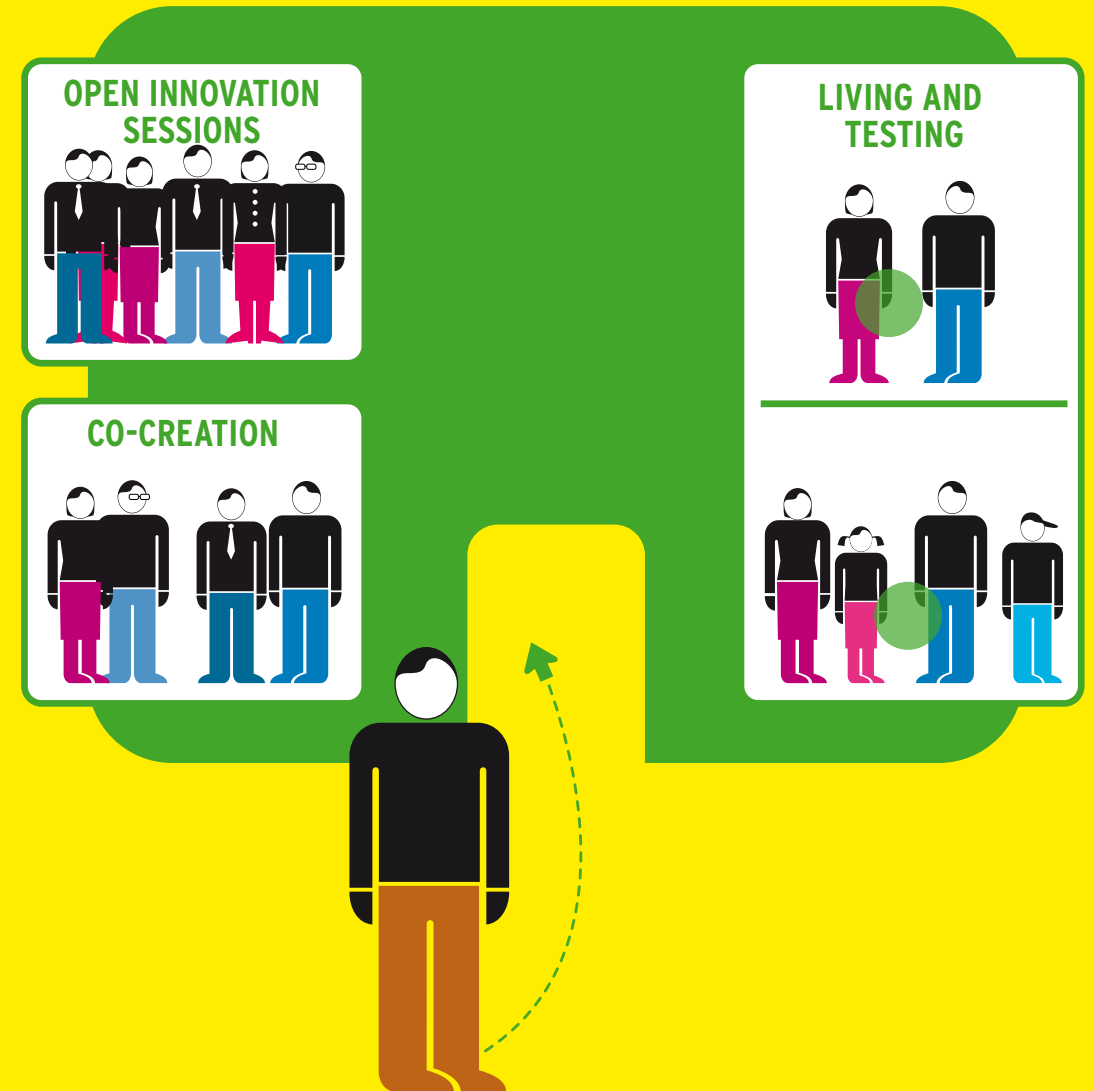
Data is recorded via user-reporting and non-obtrusive observational techniques.



2 Developing and experiencing

Insights generated in the field are translated into sustainable solutions by multi-disciplinary teams through open innovation sessions and co-creation workshops.

Early prototypes are installed in the **LIVING LAB** homes and tested by temporary residents.



3 Evaluating prototypes

Fully functional prototypes are installed in existing or newly built homes in order to let users experience future product and service ideas in their homes.



LIVING LAB house

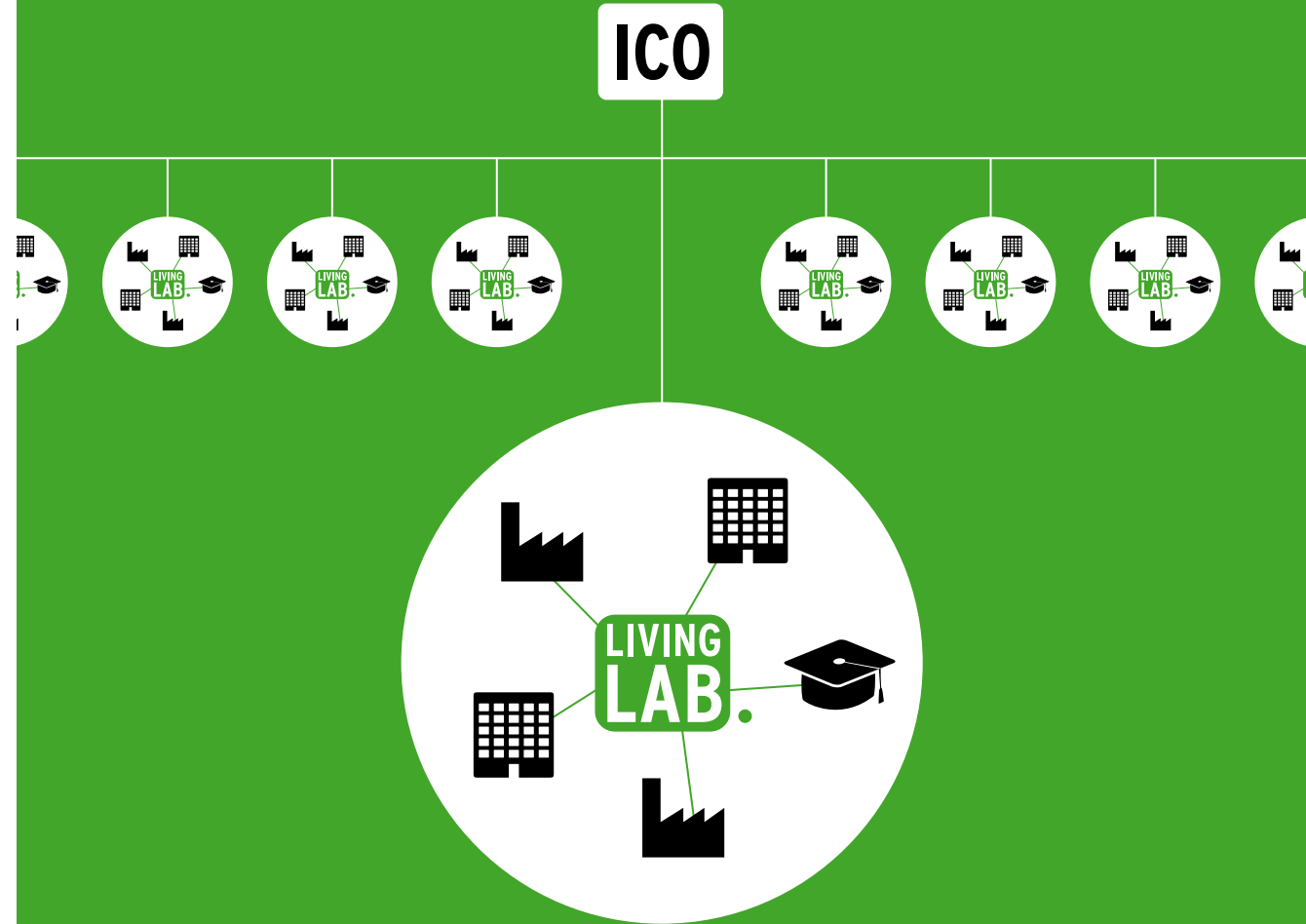
The **LIVING LAB** house consists of modular inhabitable units that can be adapted to the different research projects.



LIVING LAB organisation

A central International Coordination Office (ICO) is responsible for coordinating the **LIVING LAB** activities across various locations.

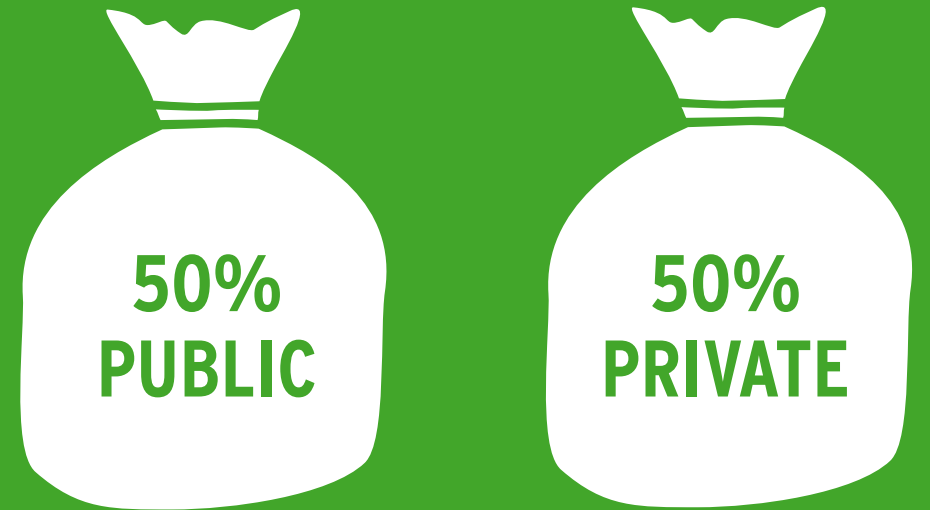
Each **LIVING LAB** is connected to local universities, research institutes, companies and governments.



LIVING LAB finance

Income is generated through contract research for clients.

Public and private sponsors at European and local level cover other running costs and investments.



Join **LIVING LAB!**

As **LIVING LAB** member you have access to:

- The unique research infrastructure,
- Your customer across Europe,
- Research results and methodologies,
- The international partner network,
- Measurable sustainability impacts.



YOU?

Contact **LIVING LAB**

Contact

projectoffice@livinglabproject.org

Website

www.livinglabproject.org

Check under 'partners' for your local contact person.





WWW.LIVINGLABPROJECT.ORG